

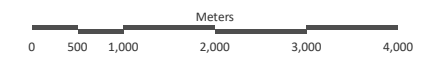


**CITY OF BELLEVILLE  
OFFICIAL PLAN**

**Schedule G  
Constraint Areas**

- Operating Waste Management Site
  - Closed Waste Management Site
  - Crown Land (Official Plan policies not applicable)
  - Mineral Aggregate
  - Mineral Aggregate Licenced
  - Significant Groundwater Recharge Areas
  - Highly Vulnerable Aquifers
  - Wellhead Protection Area A
  - Wellhead Protection Area B
  - Wellhead Protection Area C
  - Intake Protection Zone 1
  - Intake Protection Zone 2
  - Regulated Bird Hazard and Surface Approach Area for the Trenton Air Force Base
- Gravel Deposits**
- Sand and Gravel Resource Area (Primary)
  - Sand and Gravel Resource Area (Secondary)
  - Sand and Gravel Resource Area (Tertiary)
- Bedrock**
- Paleozoic bedrock outcrop; areas of exposed bedrock partially covered by a thin veneer of drift. Drift thickness is generally less than 1 metre.
  - Paleozoic bedrock covered by drift; drift thickness is generally 1 to 8 metres. Bedrock outcrops may occur.
  - Paleozoic bedrock covered by drift; drift thickness is generally 8 to 15 metres. Isolated bedrock outcrops may occur.
- Other Features**
- Drinking Water Intakes
  - Municipal Boundary
  - Former Industrial Lands
  - Roads
  - Railways
  - Watercourses
  - Bay of Quinte

**By-law 2021-180**



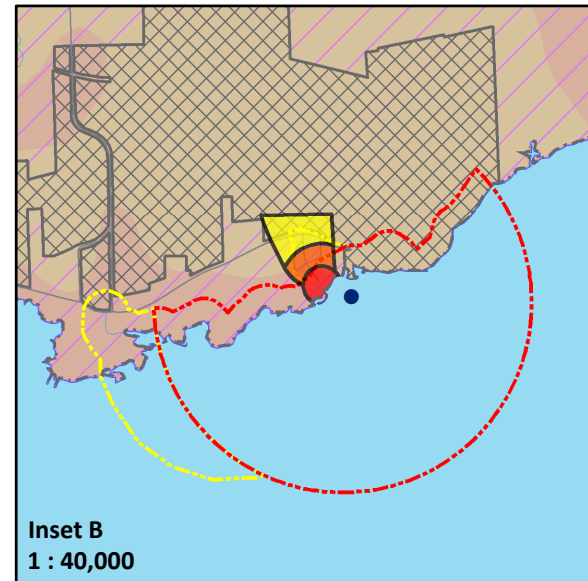
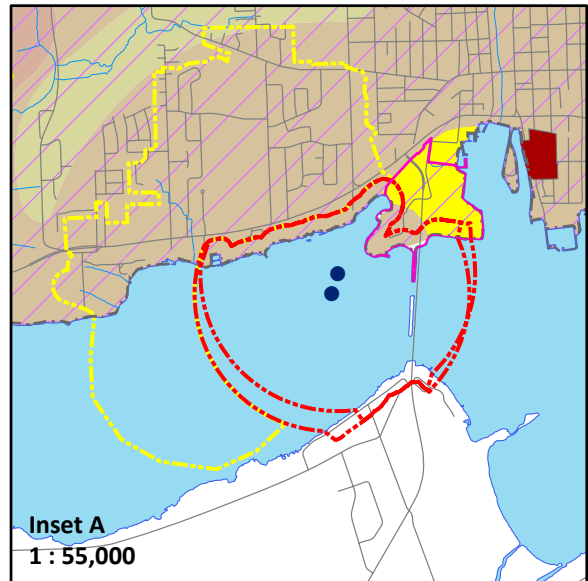
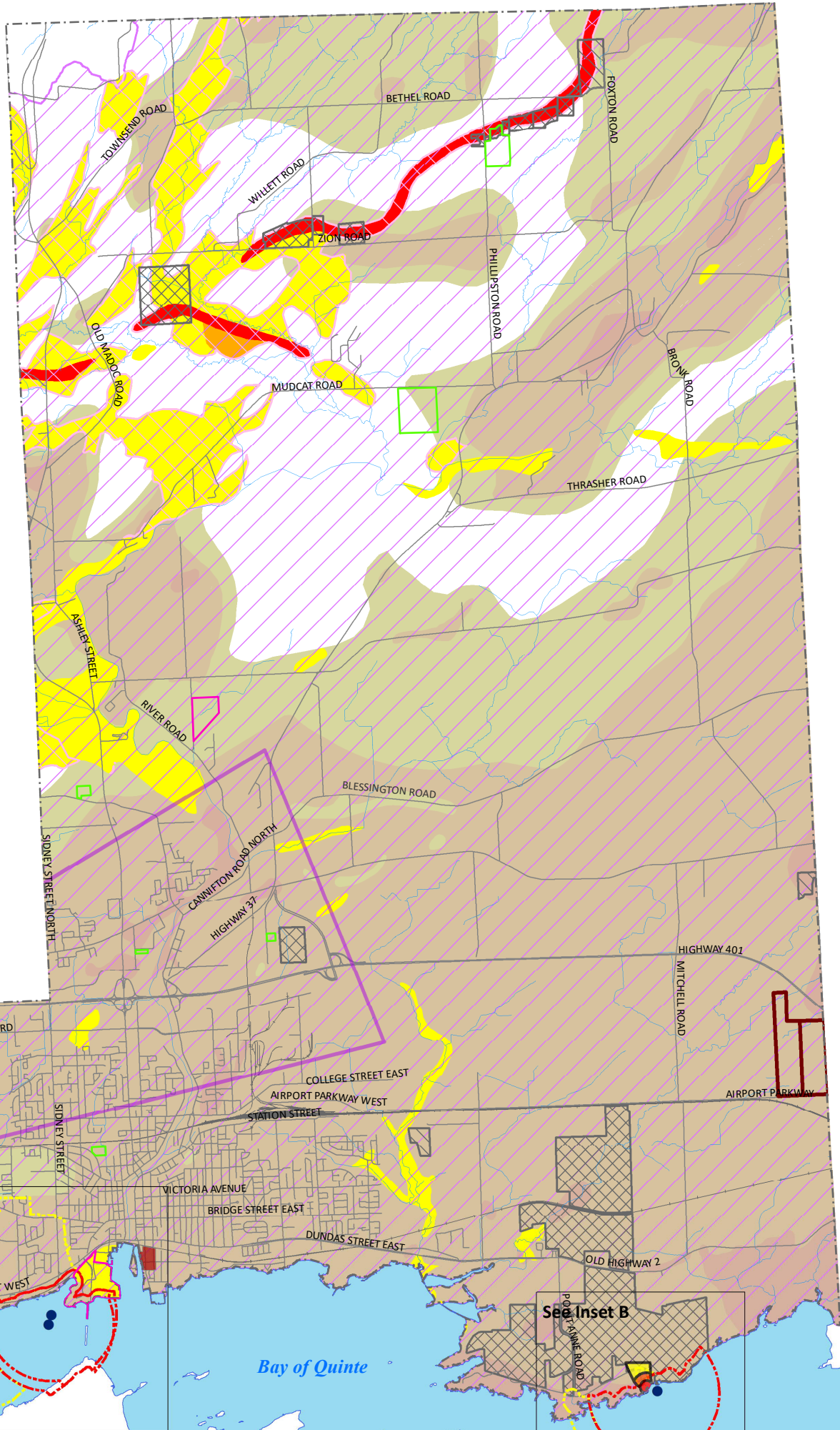
SCALE 1:82,500  
MAP DRAWING INFORMATION:  
ESRI Basemaps, City of Belleville, MNRF (2019), Canvec (2018), Ministry of Energy, Northern Development and Mines & Quinte Conservation

MAP PROJECTION: NAD 1983 UTM Zone 18N , ROTATED 15°

PROJECT: 199902

STATUS: DRAFT

DATE: 2021-10-19



See Inset A

See Inset B